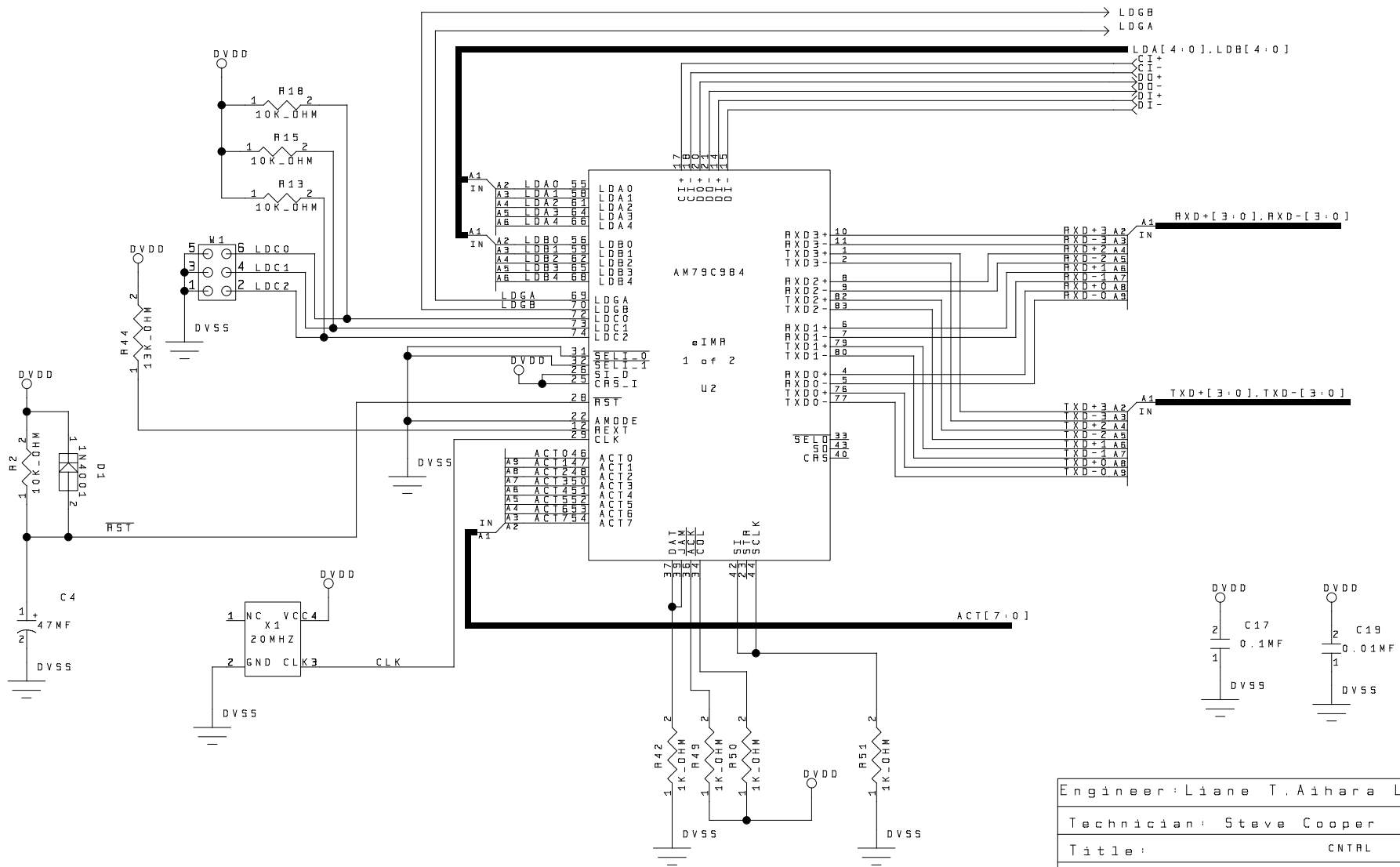
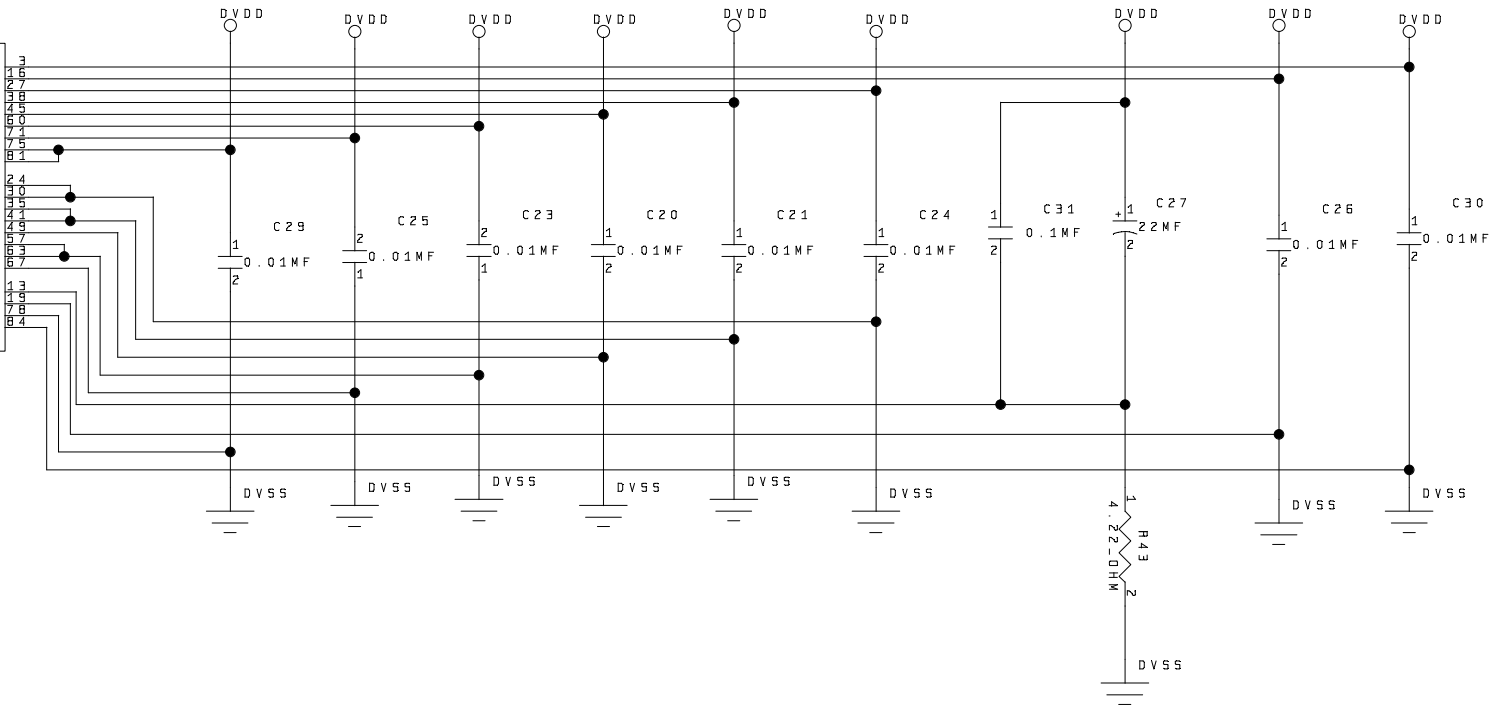
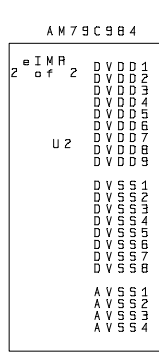


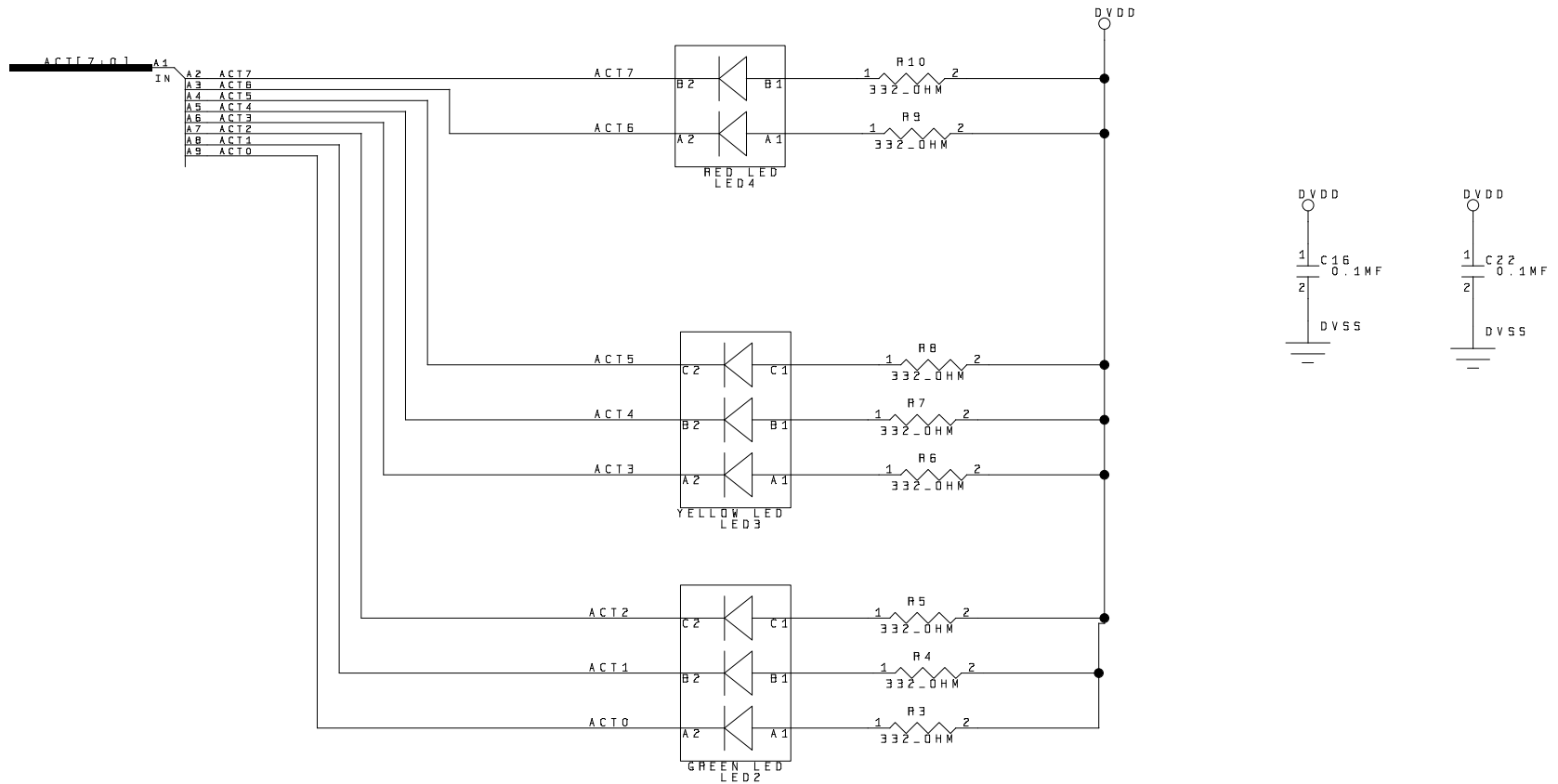
Engineer:	Liane T. Aihara Larioza
Technician:	Steve Cooper
Title:	MAINBD
Sheet page number	1
Date & Time	4-17-1998_16:15
Advanced Micro Devices	
Project	DUMBHUB



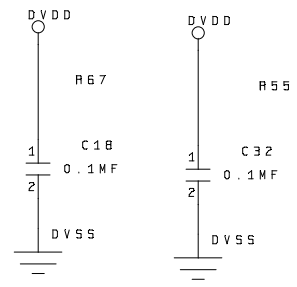
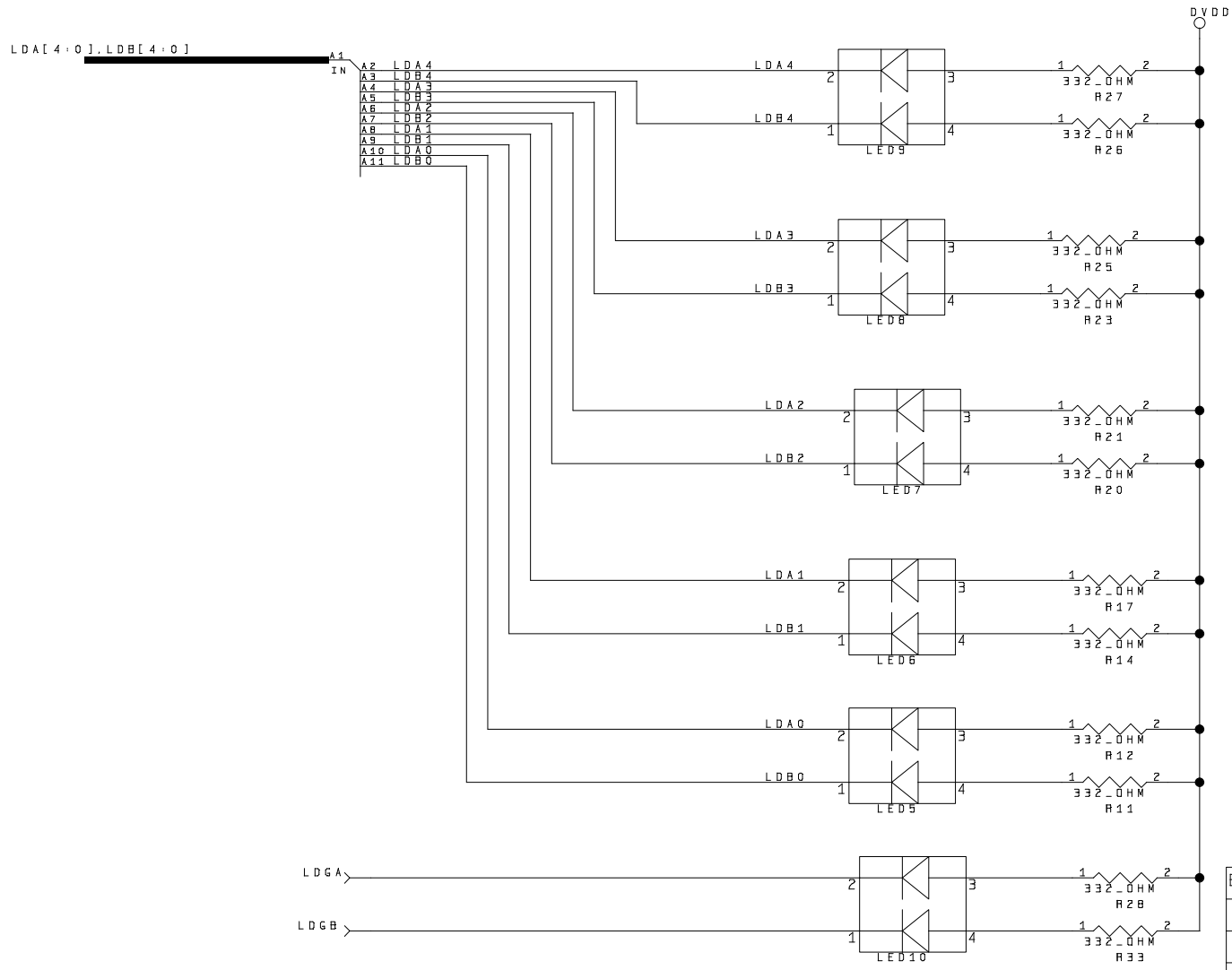
Engineer:	Liane T. Aihara Larioza
Technician:	Steve Cooper
Title:	CNTRL
Sheet page number	1
Date & Time	4-17-1998-16:07
Advanced Micro Devices	
Project	DUMBHUB



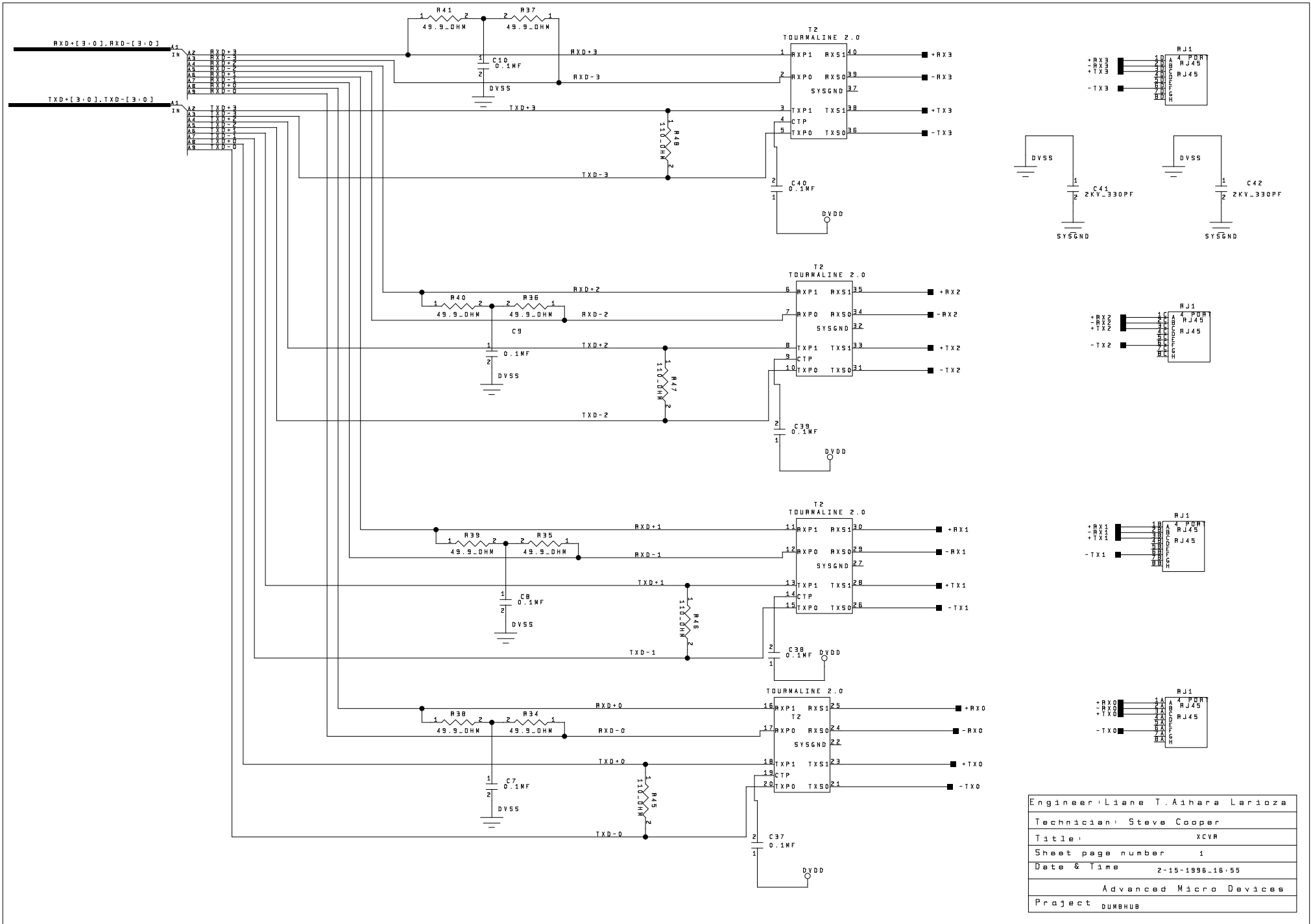
Engineer:	Liane T. Aihara Larioza
Technician:	Steve Cooper
Title:	CNTRL
Sheet page number	2
Date & Time	4-17-1998_16:07
Advanced Micro Devices	
Project	DUMBHUB



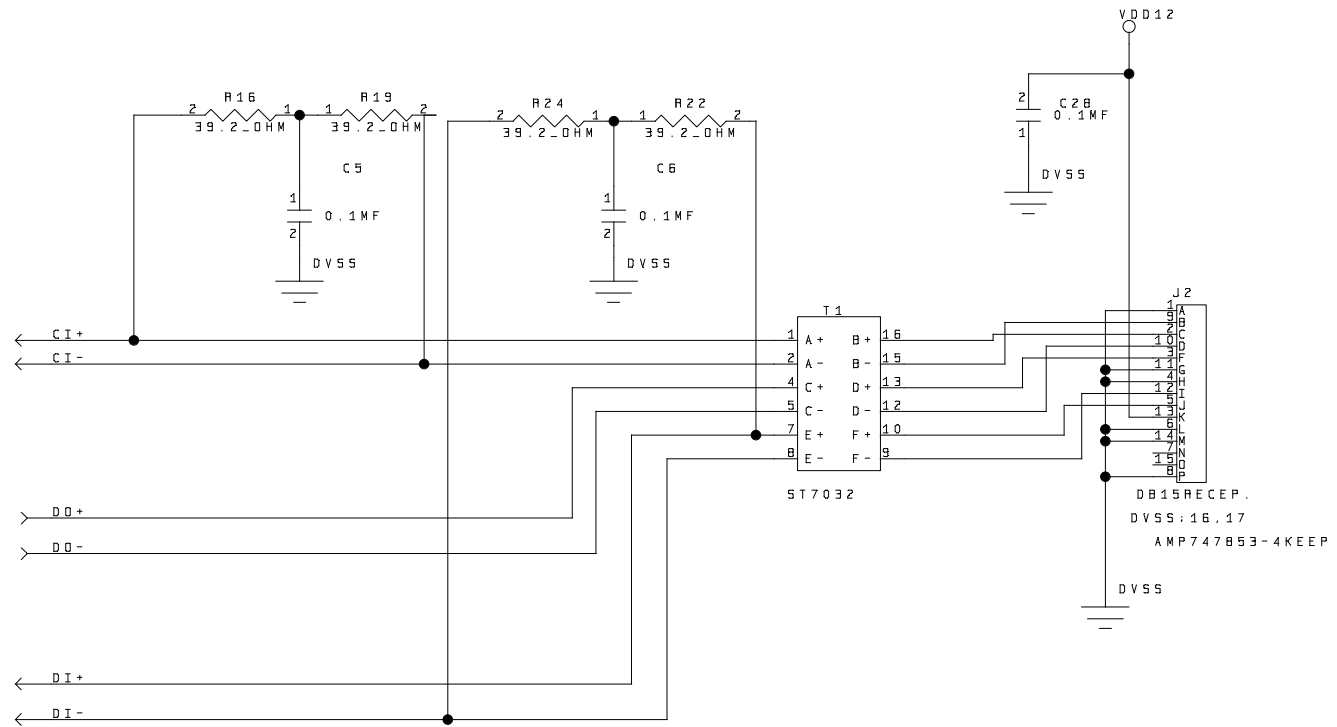
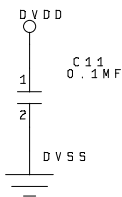
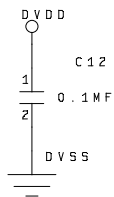
Engineer:	Liara T. Aihara Larioza
Technician:	Steve Cooper
Title:	LED_ACT
Sheet page number	1
Date & Time	4-17-1998_16:08
Advanced Micro Devices	
Project	DUMBHUB



Engineer	Liane T. Aihara Larioza
Technician	Steve Cooper
Title	LED-BLK
Sheet page number	1
Date & Time	1-17-1996.10.54
Advanced Micro Devices	
Project	DUMBHUB

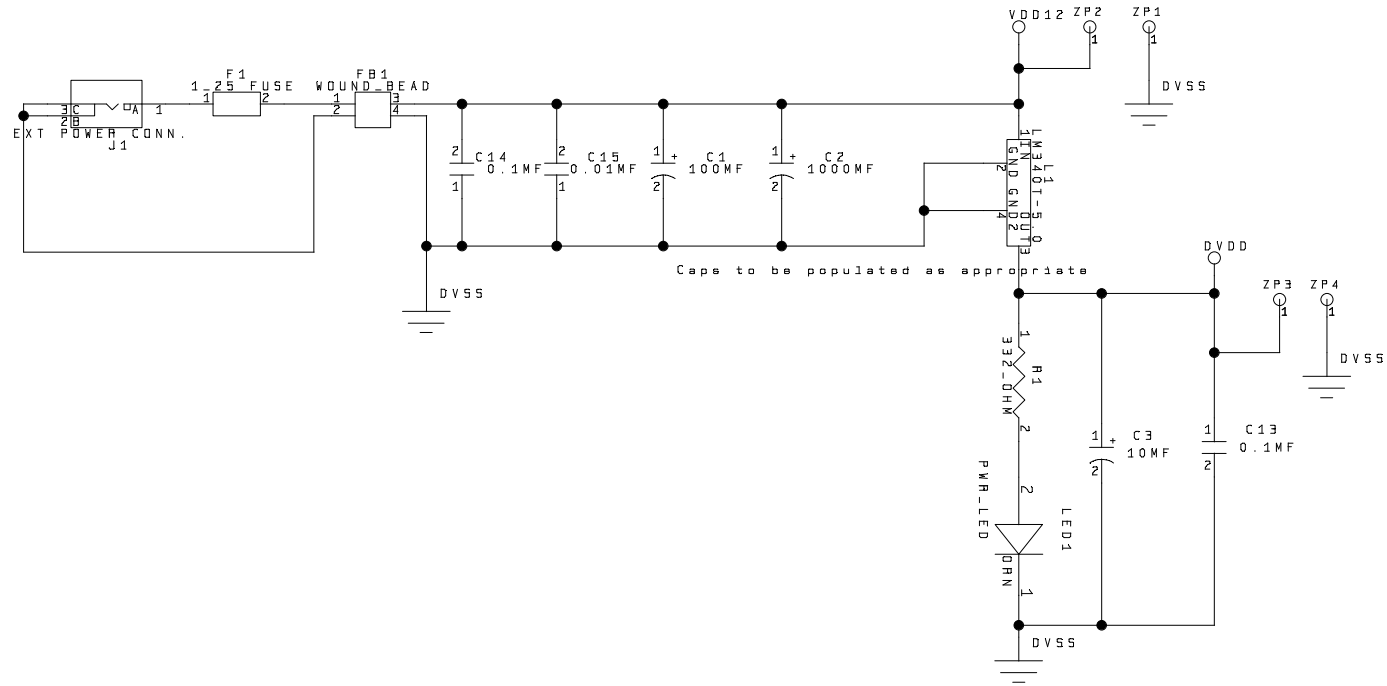


Engineer: Liane T. Aihara Larioza
Technician: Steve Cooper
Title: XCVR
Sheet page number 1
Date & Time 2-15-1996.16:55
Advanced Micro Devices
Project DUMBHUB



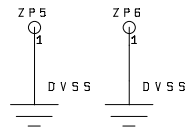
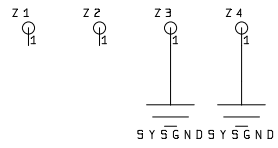
Engineer:	Liane T. Aihara Larioza
Technician:	Steve Cooper
Title:	AUI-BLK
Sheet page number	1
Date & Time	1-18-1996-9:53
Advanced Micro Devices	
Project	DUMBHUB

12 volt supply for AUI



Caps to be populated as appropriate

Engineer:	Liane T. Aihara Larioza
Technician:	Steve Cooper
Title:	PWRSPLY
Sheet page number	1
Date & Time	1-17-1996_11.26
Advanced Micro Devices	
Project	DUMBHUB



Engineer:	Liane T. Aihara Larioza
Technician:	Steve Cooper
Title:	MAINBD
Sheet page number	2
Date & Time	4-17-1998_16:15
Advanced Micro Devices	
Project	DUMBHUB

item	Reference	Qty	Devaice	Device Description	Package	Vendor	Vendor PN	NOTES
1	C1	1	Capacitor	ELEC_107	515D	Sprague	515D107M016A A6A	
2	C15,C19- 21,C23- 26,C29-30	10	Capacitor	.01MF COG Ceramic Capacitor	CC1812	KEMET	C1812C103J5G AC	
3	C2	1	Capacitor	ELEC_108	515D	Sprague	515D108M016C G6A	
4	C27	1	Capacitor	TANT_226	[C]6032	Sprague	293D226X9016 C2T	
5	C3	1	Capacitor	TANT_106	[C]6032	Sprague	293D106X9016 C2T	
6	C33	1	Capacitor	220PF X&R Ceramic Capacitor	RC1206	Kemet	C1206CC221K5 RAC	
7	C4	1	Capacitor	ELEC_476	515D	Sprague	515D476M016A W6A	
8	C41-42	2	Capacitor	2KV_331 330 pF 2KVDC Ceramic Cap	[PAN]7243	Panasonic	ECKT3D331KB	Do not stuff or order
9	C5- 14,C16- 18,C22,C2 8,C31- 32,C37-40	21	Capacitor	.1MF X7R Ceramic Capacitor	RC1206	KEMET	C1206C104K5R AC	DO Not Stuff C7,C8,C9,C10
10	D1	1	Diode	1N4001				
11	F1	1	Fuse	Resettable fuse; 750mA hold current, 1.5A trip current	SMD	Ray-Chem	SMD075-002	
12	FB1	1	FERRITE2	WOUND_BEAD	FB3	Fair-Rite	29-43-666681	
13	J2	1	AMP747853-4	DB-15 RIGHT ANGLE POSTED CONNECTOR	AMP748876-2	AMP	AMP748876-2	
14	L1	1	Voltage Regulator	3-Terminal positive regulator. 5 volt output	TO-220 Power package	National Semiconductor	LM340T5	

item	Reference	Qty	Devaice	Device Description	Package	Vendor	Vendor PN	NOTES
				voltage				
15	L1	1	TO-220 Mounting Kit	TO-220 Mounting Kit	N/A	Thermalloy	4880	
16	L1	1	Heat Sink for To-220	Heat Sink for To-220	N/A	Thermalloy	6078B	
17	LED1	1	LED	Single Orange Right Angle LED	PCT220	Ledtronics	PCT220TO5 PCT220TO5	
18	LED2	1	LED	TRI Green LED Modular bargraph	Tri-BAR	Ledtronics	RBG280T3-3G-B	
19	LED3	1	LED	TRI Yellow LED Modular bargraph	Tri-BAR	Ledtronics	RBG280T3-3Y-B	
20	LED4	1	LED	BI Red LED Modular bargraph	Bi-BAR	Ledtronics	RBG280T3-2R-B	
21	LED5-10	6	LED	Bi-level LEDs Green/Yellow		Dialight	553-0223	
22	R1,R3-12,R14,R17,R20-21,R23,R25-28,R33	21	Resistor	332 Ohm resistor, 1%	RC1206	DALE	CRCW12063320F	
23	R16,R19,R22,R24	4	Resistor	39.2 Ohm resistor, 1%	RC1206	DALE	CRCW120639R2F	
24	R2,R13,R15,R18	4	Resistor	10kOhm resistor, 1%	RC1206	DALE	CRCW12061002F	
25	R34-41	8	Resistor	49.9 Ohm resistor, 1%	RC1206	DALE	CRCW120649R9F	
26	R42,R49-51	4	Resistor	1kOhm resistor, 1%	RC1206	DALE	CRCW12061001F	
27	R43	1	Resistor	4.22 Ohm resistor, 1%	RC1206	DALE	CRCW120642X2F	
28	R44	1	Resistor	13kOhm resistor, 1%	RC1206	DALE	CRCW12061302F	
29	R45-48	4	Resistor	110 Ohm resistor, 1%	RC1206	DALE	CRCW12061100F	

item	Reference	Qty	Devaice	Device Description	Package	Vendor	Vendor PN	NOTES
30	RJ1	1	RJ45 Connector	MJHSG884A	MJHSG884A	Maxconn	MJHS -G-88-4A-PG4	
31	T1	1	Transformer	LAN Transformer	16PSOLIC	Valor	ST7032	
32	T2	1	Transformer	Quad 1:1 Isolation	Tourmaline	Pulse Engr	PE-68050	
33	U2	1	AM79C984	eIMR	MET84PLCC	AMD	79C984	
34	U2	1	SOCKET	84 PIN PLCC SOCKET	MET84PLCC	METHODE	213-084-601	
35	W1	1	JUMPER	6 PIN JUMPER	JUMP6	AMP	4-103240-0	
36	W1	1	SHUNT	SHUNT	N/A	MOLEX	15-38-1024	
37	X1	1	Crystal Oscillator	20 MHz half-size clock crystal	XSTAL_H8P	MF Electronics	H1280-20M	
38	Z1-4	4	Screw 6-32	Screw 6-32x0.250"	Screw6_32	SPC	SRH-0632-016-SN ?????????	Make sure to order plastic
39	Z1-4	4	Stand off	Stand off 6-32 threaded 0.500"	N/A	HH Smith	8673 ????????????????	Make sure to order plastic
40	ZP1-6	6	P.C. PIN	P.C. Pin	TP1	Concord	10-8025-2-03	
41	J1	1	Power adapter	PJ002		Cui /Stack Inc.	PJ-002	
42	J1	1	Power supply	AC to DC power supply input 120VAC 60Hz 16w output 12VDC 800ma		Cui/Stack Inc.	DV-1280	