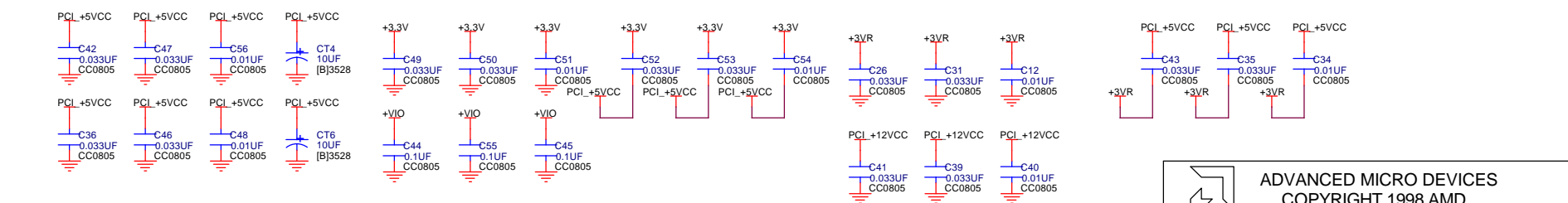
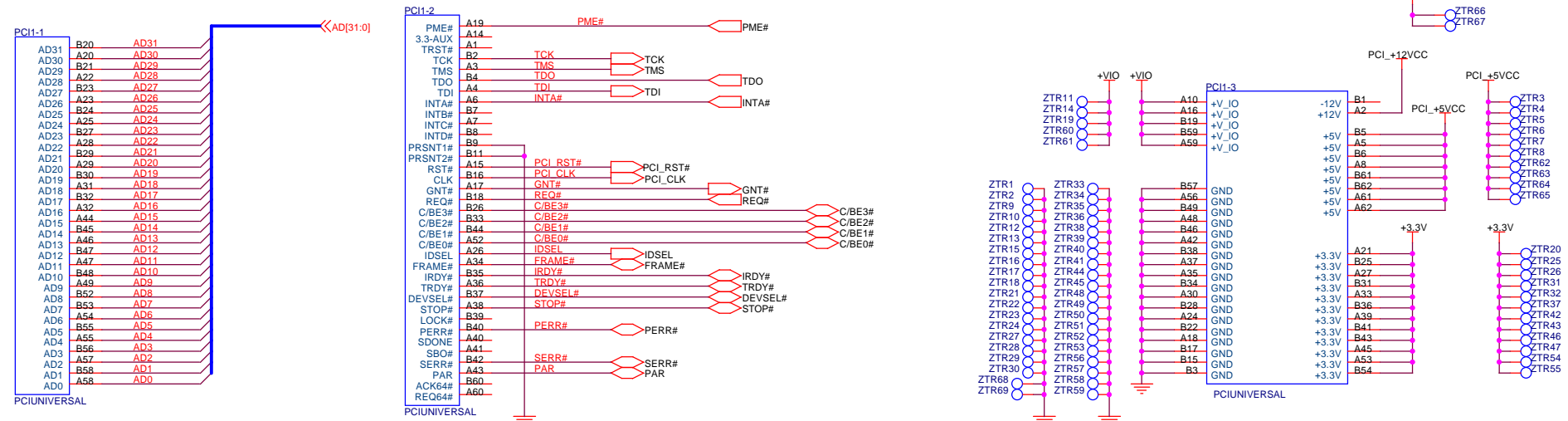
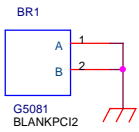

ADVANCED MICRO DEVICES
 COPYRIGHT 1998 AMD
SCHEMATIC DIAGRAM
NetPHY-1LP NIC LT PCB

SIZE	DRAWING NO.	BOARD NO.	REV
B	NetPHY-1LP_LT_2	NetPHY-1LP_LT_2	2
Date: Wednesday, August 11, 1999		Sheet 2 of 5	



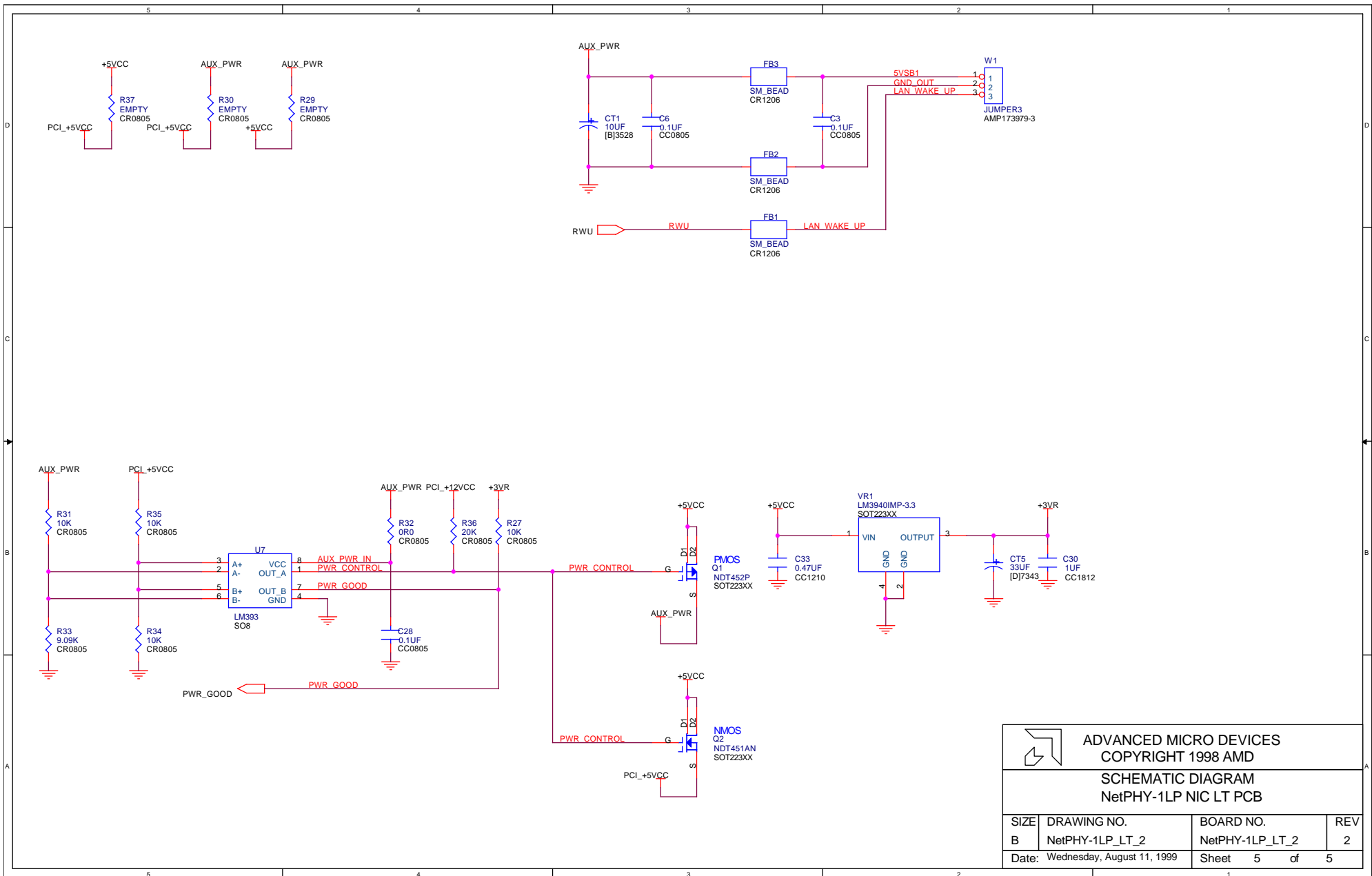
Tools are part of board,
not components.


PCI Bus Interface

ADVANCED MICRO DEVICES
COPYRIGHT 1998 AMD

SCHEMATIC DIAGRAM
NetPHY-1LP NIC LT PCB

SIZE	DRAWING NO.	BOARD NO.	REV
B	NetPHY-1LP_LT_2	NetPHY-1LP_LT_2	2
Date:	Wednesday, August 11, 1999	Sheet 4 of 5	



 ADVANCED MICRO DEVICES COPYRIGHT 1998 AMD			
SCHEMATIC DIAGRAM NetPHY-1LP NIC LT PCB			
SIZE	DRAWING NO.	BOARD NO.	REV
B	NetPHY-1LP_LT_2	NetPHY-1LP_LT_2	2
Date: Wednesday, August 11, 1999		Sheet 5 of 5	

This is the BOM for the PCnet-FAST+ NIC with the NetPHY-1LP PHY

	A	B	C	D	E	F	G	H	I
1	QTY	Device Description	Value	Package	Part Number	Manufacturer	Socket	Reference Number	Stuffing, EMI Optimization
2	1	PCI BRACKET	G5081	BLANKPCI2	G5081	Globe	NO	BR1	BR1
3	2	SCREW 4-40 PHILLIPS HEAD 1/4"	4-40	4-40	???	ASMCO	YES	BR1	BR1
4	3	10uF Tantalum Chip Capacitor [B]3528 16 Volt 10%	10UF	[B]3528	T491B106K016AS	Kemet	NO	CT1, CT4, CT6	CT1, CT4, CT6
5	2	1uF Tantalum Chip Capacitor 16 Volt 10% [A]3216	1uF	[A]3216	T491A105K016AS	Kemet	NO	CT2, CT3	CT2, CT3
6	1	33uF Tantalum Chip Capacitor [C]7343 16 Volt 20%	33UF	[D]7343	T491D336M016AS	Kemet	NO	CT5	CT5
7	25	0.1uF Ceramic Capacitor 50 Volt 10% 0805 XR7	0.1uF	CC0805	C0805C104K5RAC	Kemet	NO	C1, C2, C3, C5, C6, C8, C9, C10, C11, C13, C14, C15, C16, C17, C20, C22, C23, C24, C25, C28, C32, C37, C44, C45, C55	C1, C2, C3, C5, C6, C8, C9, C10, C11, C13, C14, C15, C16, C17, C20, C22, C23, C24, C25, C28, C32, C37, C44, C45, C55
8	2	18PF COG Ceramic Capacitor 50Volt 0805 10%	18PF	CC0805	C0805C180K5GAC	Kemet	NO	C4, C7	C4, C7
9	11	0.01uF Ceramic Capacitor 50 Volt10% 0805 XR7	0.01uF	CC0805	C0805C103K2RAC	Kemet	NO	C12, C21, C27, C29, C34, C38, C40, C48, C51, C54, C56	C12, C21, C27, C29, C34, C38, C40, C48, C51, C54, C56
10	1	1000pF Surface Mount Capacitor 2KV DC 1808 10% NPO	1000PF	CC1808	MC1808X102KN202	Arco Electronics	NO	C18	C18
11	14	0.033MF Ceramic Capacitor 50Volt 0805 XR7 10%	0.033UF	CC0805	C0805C333K5RAC	Kemet	NO	C26, C31, C35, C36, C39, C41, C42, C43, C46, C47, C49, C50, C52, C53	C26, C31, C35, C36, C39, C41, C42, C43, C46, C47, C49, C50, C52, C53
12	1	1MF XR7 Ceramic Capacitor 50Volt 1812 10%	1UF	CC1812	C1812C105K5RAC	Kemet	NO	C30	C30
13	1	0.47uFCeramic Capacitor 50Volt 1210 XR7 20%	0.47UF	CC1210	C1210C474M5UAC	Kemet	NO	C33	C33
14	4	Ferrite Bead inductor	SM_BEAD	CR1206	ILB-120650<25%	DALE	NO	FB1, FB2, FB3, FB4	FB1, FB2, FB3, FB4
15	1	LED Bi-level Green Low Current Right Angle	553-0222	LED-BILEVEL	553-0222	Dialight	NO	LED1	LED1
16	1	PMOS P-Channel Enhancement Mode Field Effect Transistor	NDT452P	SOT223XX	NDT452P	National Semiconductor	NO	Q1	Q1
17	1	NMOS N-Channel Enhancement Mode Field Effect Transistor	NDT451AN	SOT223XX	NDT451AN	National Semiconductor	NO	Q2	Q2
18	1	Modular Jack 8 pos. Cat. 5 with Shield. Built in Yellow LED and Green Led	RJHS5384	RJHS5384	RJHS5384	Amphenol	NO	RJ1	RJ1
19	4	1.5K Ohm Chip Resistor 1% 125mW 0805	1.5K	CR0805	RK73H2A1501F	KOA	NO	R1, R8, R9, R12	R1, R8, R9, R12
20	1	22.1K Ohm Chip Resistor 1% 125mW 0805	22.1K	CR0805	RK73H2A2212F	KOA	NO	R2	R2
21	6	1K Ohm Chip Resistor 1% 125mW 0805	1K	CR0805	RK73H2A1001F	KOA	NO	R3, R5, R7, R18, R20, R28	R3, R5, R7, R18, R20, R28
22	6	49.9 Ohm Chip Resistor 1% 125mW 0805	49R9	CR0805	RK73H2A49R9F	KOA	NO	R4, R6, R15, R16, R17, R25	R4, R6, R15, R16, R17, R25
23	8	10K Ohm Chip Resistor 1% 125mW 0805	10K	CR0805	RK73H2A1002F	KOA	NO	R10, R21, R24, R26, R27, R31, R34, R35	R10, R21, R24, R26, R27, R31, R34, R35
24	1	Empty do not stuff	EMPTY	CR1210	N/A	N/A	NO	R11	DO NOT STUFF
25	3	Jumper 0 Ohm Chip Resistor 0805 5%	0R0	CR0805	RM73Z2A000	KOA	NO	R13, R14, R32	R13, R14, R32

This is the BOM for the PCnet-FAST+ NIC with the NetPHY-1LP PHY

	A	B	C	D	E	F	G	H	I
1	QTY	Device Description	Value	Package	Part Number	Manufacturer	Socket	Reference Number	Stuffing, EMI Optimization
26	4	Empty do not stuff	EMPTY	CR0805	N/A	N/A	NO	R19, R29, R30, R37	DO NOT STUFF
27	2	75 Ohm Chip Resistor 1% 125mW 0805	75R0	CR0805	RK73H2A75R0F	KOA	NO	R22, R23	R22, R23
28	1	9.09K Ohm Chip Resistor 1% 125mW 0805	9.09K	CR0805	RK73H2A9092F	KOA	NO	R33	R33
29	1	20K Ohm Chip Resistor 1% 125mW 0805	20K	CR0805	RK73H2A2002F	KOA	NO	R36	R36
30	1	High Speed LAN Magnetic 1:1 Module 10/100 BASE-TX	PE69012	PE69012	PE-69012	Pulse Engineering	NO	T1	T1
31	1	CMOS Serial EPROM 3.3V DIP8	AT93C46	DIP8	AT93C46-10PC-2.5	ATMEL	YES	U1	DO NOT STUFF
32	1	8 Pin DIP Screw Machine Socket	SOCKET	DIP8	ICA-083-S-TT	Robinson Nugent	YES	U1	DO NOT STUFF
33	1	CMOS Serial EPROM 3.3V SO8	AT93C46	SO8	AT93C46-10SC-2.5	ATMEL	NO	U2	U2
34	1	Dual D-Type Positive Edge_Triggred Flip-Flop 3.3Volts Supply 14PSOIC	74LVX74	SO14	MC74LVX74D	Motorola	NO	U3	U3
35	1	1 Megabit (128x8-bit)CMOS Flash Memory 3.3 volt only 32PLCC	AM29LV010B-45RJC	AMP822273-1	AM29LV010B-45RJC	AMD	YES	U4	DO NOT STUFF
36	1	32 Pin PLCC Socket Surface Mount	SOCKET	32PLCC	822273-1	AMP	YES	U4	U4
37	1	NetPHY-1LP 3.3V Low Power 10/100-TX/FX Ethernet Transceiver	Am79C874	TQFP12X12-80	Am79C874VC	AMD	NO	U5	U5
38	1	Pcnet-FAST+ Enhanced 10/100 Mbps PCI Ethernet Controller	AM79C972	QFP28X28-160	AM79C972KC	AMD	NO	U6	U6
39	1	Low Power Low Offset Voltage Dual Coparators	LM393	SO8	LM393M	National Semiconductor	NO	U7	U7
40	1	1A Low Dropout Regulator for 5V to 3.3V Conversion	LM3940IMP3.3	SOT223XX	LM3940IMP-3.3	National Semiconductor	NO	VR1	VR1
41	1	3 Position Single Row Breakaway Header Assembly	JUMPER3	AMP173979-3	173979-3	AMP	NO	W1	W1
42	1	25Mhz SMD Type Quartz Crystal	25MHZ	XMXTAL	EC2SM-25.000M	Ecliptek	NO	Y1	Y1
43	1	Jumper 0 Ohm Chip Resistor 1808	0R0	CR1808		KOA	NO	C19	C19