



---

CORPORATE  
CITIZENSHIP  
SUMMARY  
**INDIA**

GREATER TECHNOLOGY GREATER GOOD

# MESSAGE FROM OUR PRESIDENT AND CEO



2019 marks AMD's 50th anniversary. Our commitment to pushing the boundaries of what is possible in high performance computing has never been stronger. AMD's innovative computing and graphics products are helping the best and the brightest tackle the world's toughest challenges. From medical advances and scientific breakthroughs to solutions for more efficient use of our natural resources, our products are transforming lives and our planet for the better.

At AMD, we strive to make a positive impact on our industry and our world. From Fortune 500 businesses to cutting-edge scientific research institutions to everyday consumers – users rely on AMD technology to make what was impossible, possible. We're not slowing down. There is always the next challenge to solve.

We are extremely proud of our history and are equally excited about what we will accomplish over the next 50 years for our communities and our planet.

A handwritten signature in black ink, reading "Lisa Su".

**Dr. Lisa Su**

President and CEO

**AMD** | **50**

CELEBRATING 50 YEARS *of* INNOVATION

# WHO WE ARE

---

Since our founding in 1969, AMD has driven innovation in high-performance computing, graphics and visualization technologies – the building blocks for gaming, immersive platforms and the datacenter. Hundreds of millions of consumers, leading Fortune 500 businesses and cutting-edge scientific research facilities rely on AMD technology daily to improve how they live, work and play. AMD employees around the world are focused on building great products that push the boundaries of what is possible.

AMD  
**EPYC**

AMD  
**RADEON**

AMD  
**RYZEN**

Learn more at [AMD.com](https://www.amd.com)

## WHAT WE MAKE

---

### GRAPHICS

AMD combines breakthrough graphics architecture with cutting-edge software to build platforms that can handle the most challenging, important and graphics-intensive applications today – including gaming, creation, compute, AI, and virtual and augmented reality.



Gaming



Compute & AI



Virtual &  
Augmented Reality

### COMPUTE

AMD's high-performance microprocessors and chipsets deliver powerful, efficient performance for consumer and commercial devices like desktops, laptops and servers.



Client Systems



Infrastructure & Cloud

### SOLUTIONS

AMD's leading high-performance graphics and compute design capabilities uniquely enable us to create differentiated solutions for customers and partners. From embedded products that power medical imaging devices and digital signage to semi-custom processors for leading game consoles and beyond, AMD technology is everywhere.



Semi-Custom



Vertical Platforms



Partnerships





## THE POWER BEHIND INNOVATION

We strive to ensure that working conditions throughout our supply chain are safe, and that everyone involved in delivering AMD products – from the design lab to the manufacturing line – is treated with dignity and respect.

We nurture an inclusive work environment where employees bring their unique perspectives and passions to work every day.



## OUR COMMITMENT TO THE FUTURE

We are committed to operations that reduce greenhouse gas emissions and electricity use. We focus on developing energy-efficient processors, and our 2020 climate goals are verified by the Science Based Targets Initiative.

We contribute to our local communities through the time and talent of our workforce in company-sponsored volunteer events.

Learn more at [AMD.com/CorporateResponsibility](https://www.amd.com/CorporateResponsibility)



## TECHNOLOGY ENABLING A BETTER WORLD

We believe that immersive and instinctive computing will transform our lives, and we are inspired by how digital technology has improved our world. From helping students learn to creating innovative new therapies for veterans to mapping the universe we live in – AMD technology is opening new doors to a better world.

# CORE ISSUES

MAPPING OUR CORE ISSUES  
TO THE SUSTAINABLE  
DEVELOPMENT GOALS



9

INDUSTRY, INNOVATION  
& INFRASTRUCTURE



13

CLIMATE ACTION



4

QUALITY EDUCATION



8

DECENT WORK &  
ECONOMIC GROWTH



11

SUSTAINABLE CITIES  
& COMMUNITIES



3

GOOD HEALTH  
& WELL-BEING



In 2018, AMD made strong progress in four strategic focus areas, while continuing to advance a broader scope of initiatives. We participated in the first quantitative performance analysis against the U.N. Sustainable Development Goals – showing how advancing our core issues helps to address global challenges.

## DATA PRIVACY & SECURITY

At AMD, security is a top priority and we are continually working to improve the safety of our users as new risks arise. Some AMD processors have security features included in the hardware, such as Secure Encrypted Virtualization (SEV).

## ROLE OF TECHNOLOGY IN SOCIETY

AMD technology advances education, healthcare, scientific research and more. In 2018, we launched ten new product families in emerging fields like machine learning, artificial intelligence and augmented/virtual reality.

## ENERGY EFFICIENCY & CLIMATE CHANGE

AMD's 2020 climate goals span supply chain, operations and product use, and are approved by the Science Based Targets initiative. In 2018, we designed the most energy-efficient AMD mobile Accelerated Processing Unit (APU) to date, sourced 27 million kwh of renewable energy, and sustained supply chain energy and emissions well below industry averages.

## HUMAN RIGHTS & LABOR ISSUES

We expanded supplier responsibility initiatives to reach 100% of direct suppliers, maintained our 100% Corporate Equality Index score from the Human Rights Campaign, and are proud to be full members of the Responsible Business Alliance.

Learn more at [AMD.com/CoreIssues](https://www.amd.com/CoreIssues)



# NEXT HORIZON

THE DATACENTER HOLDS  
ENORMOUS POTENTIAL  
TO IMPROVE OUR WORLD

## THE WORKLOADS OF THE FUTURE REQUIRE INCREDIBLE AMOUNTS OF COMPUTE POWER



HIGH-PERFORMANCE  
COMPUTING

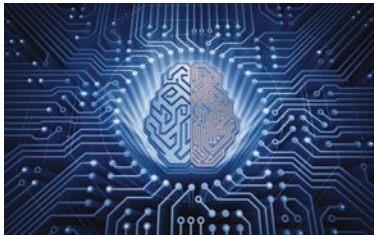


CLOUD, HYPERSCALE  
& VIRTUALIZATION



MACHINE  
INTELLIGENCE

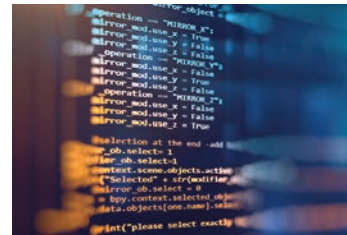
## AMD WILL PUT THAT POWER IN THE HANDS OF PEOPLE EVERYWHERE



IMMERSIVE & INSTINCTIVE  
COMPUTING



BIG DATA  
ANALYTICS



SOFTWARE-DEFINED  
STORAGE

Learn more at [AMD.com/EpycServer](https://www.amd.com/en/server)



# TECHNOLOGY ENABLING A BETTER WORLD



## NEW HPE+AMD SERVER SOLUTION ENABLES FAST, ACCURATE DATA EXPLORATION

---

Dedicated to advancing scientific discovery, the University of Notre Dame Center for Research Computing (CRC) enables multidisciplinary research through advanced computation, data analysis and other digital tools. When the CRC decided to add a new high-performance computing (HPC) cluster, one of the partners they turned to was AMD – a provider of technologies used to help solve some of the world's toughest challenges.



## zSPACE TAKES LEARNING INTO NEW DIMENSIONS WITH AMD

---

zSpace equips today's classrooms to be more adaptable, engaging and individualized for students through sophisticated, immersive learning technologies. Their instructional tools enable features like 3D visualization and modeling, haptic and touch feedback, as well as virtual reality (VR) and augmented reality (AR). More than 1,000 school districts, technical centers, medical schools and universities around the globe use zSpace.



## ENABLING PRECISION WHERE IT'S NEEDED MOST

---

Diagnostic displays play an essential role in radiological practices. To help doctors provide the best possible care to patients, Barco utilized AMD's industry-leading graphics solutions when designing their powerful new display systems. Enabling acute improvements in day-to-day medical operations, these systems revolutionize diagnostic imaging and the assessment of patient information – enhancing workflow and quality of care.

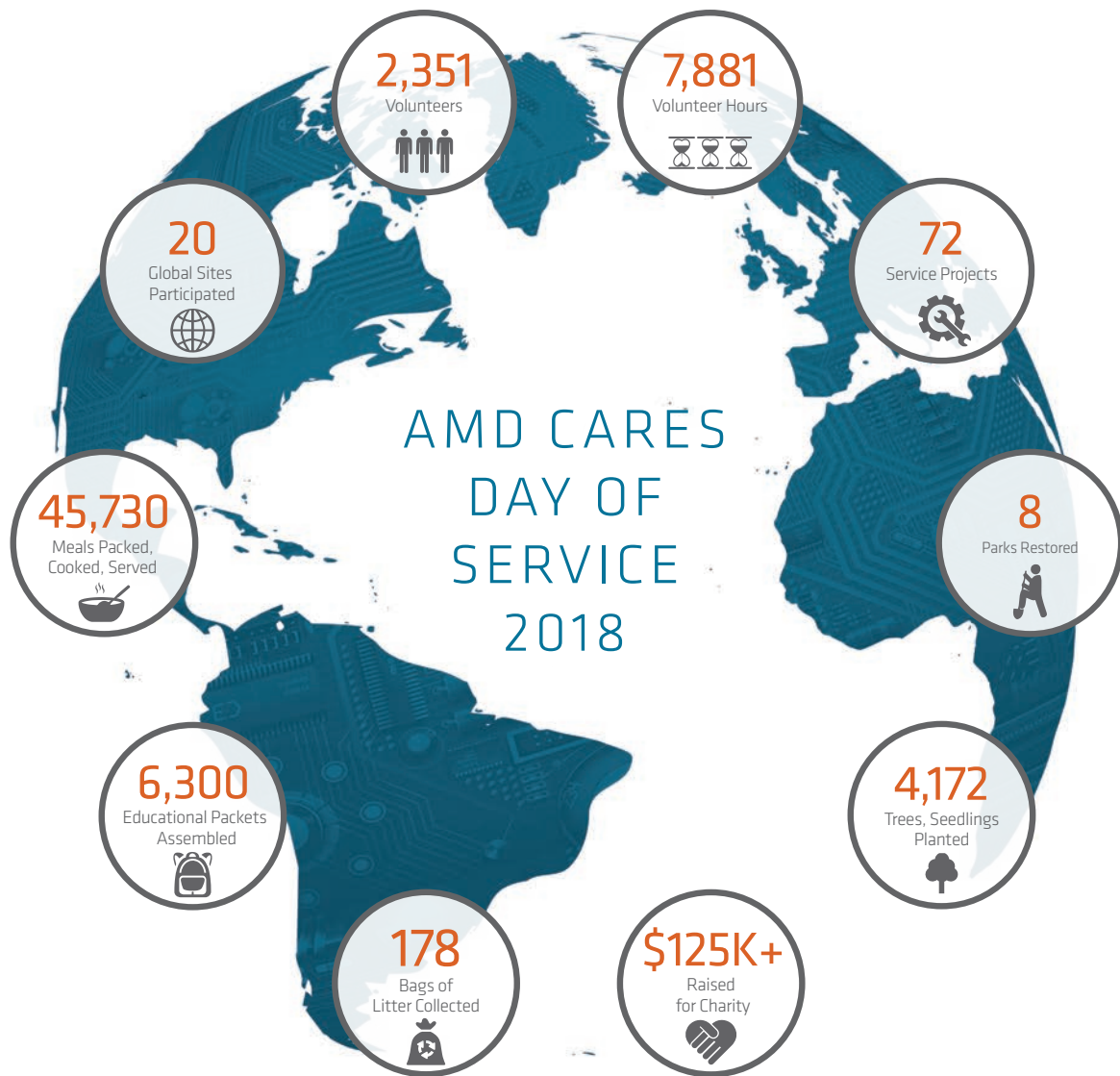


## COMMUNITY AFFAIRS

---

For more than 35 years, AMD has invested time, money, and technology in organizations that help strengthen communities worldwide. Our employees also continue to make their communities a better place through volunteerism and donations to local organizations. Since 1995, AMD has contributed \$18.2 million USD to charitable causes and our workforce has performed more than 210,000 hours of volunteer service.





## AMD CARES DAY OF SERVICE 2018

### STRENGTHENING OUR COMMUNITIES WORLDWIDE

AMD has always believed that workplace volunteering strengthens our communities, our employees and our company. Every year we amplify this belief through our annual AMD Cares Day of Service – encouraging our global workforce to volunteer in social and environmental projects, reinforcing our longstanding commitment to our communities.

# RESPONSIBILITY ON A GLOBAL SCALE



## SANTA CLARA

**Established:** 2017  
Original HQ in Sunnyvale, 1969  
**Operations:** AMD Corporate  
Headquarters, R&D, Design



## MARKHAM

**Established:** 1985  
Acquired by AMD in 2006  
**Operations:** AMD Canadian  
Headquarters and  
Graphics R&D Center



## AUSTIN

**Established:** 1978  
**Operations:** Corporate,  
R&D, Design

- R&D, Design
- Sales, Business Services
- Corporate Offices

## AMD REGIONS

Americas

1

EMEA

2

Asia Pacific

3

Greater China

4

India

5

1

- Atlanta, GA
- Austin, TX
- Bellevue, WA
- Boxborough, MA
- Buenos Aires, Argentina
- Calgary, Alberta
- Fort Collins, CO
- Houston, TX

- Maple Grove, MN
- Markham, Ontario
- Mexico City, Mexico
- Orlando, FL
- San Diego, CA
- Santa Clara, CA
- São Paulo, Brazil

2

- Brussels, Belgium
- Dubai, United Arab Emirates
- Grenoble, France
- Istanbul, Turkey
- Milan, Italy
- Milton Keynes, United Kingdom
- Moscow, Russia
- Munich, Germany



## HYDERABAD

Established: 2008

Operations: R&D, Design,  
Focusing on Graphics and  
Computing Solutions



## MALAYSIA

Penang Established: 1972

Operations: Assembly,  
Test, Mark and Pack Facility

Cyberjaya Established: 2008

Operations: Sales, Business Services



## BENGALURU

Established: 2004

Operations: R&D, Design  
Focusing on Graphics and  
Computing Solutions



## SINGAPORE

Established: 1984

Operations: Singapore Product  
Development Center (SPDC)  
and APJ Sales & Marketing



## BEIJING

Established: 2004

Operations: Greater  
China Headquarters,  
Sales, R&D, Design



## SHANGHAI

Established: 2006

Operations: Shanghai  
Research and Development  
Center (SRDC); AMD's  
Largest System Design Hub  
Outside of the United States



## TAIPEI

Established: 1987

Operations: R&D, Design



3

- Bangkok, Thailand
- Cyberjaya, Malaysia
- Jakarta, Indonesia
- Melbourne, Australia
- Penang, Malaysia
- Seoul, South Korea
- Singapore
- Sydney, Australia

4

- Beijing, China
- Chongqing, China
- Hong Kong, China
- Hsinchu, Taiwan, China
- Shanghai, China
- Shenzhen, China
- Suzhou, China
- Taipei, Taiwan, China

5

- Bengaluru, India
- Gurgaon, India
- Hyderabad, India
- Mumbai, India

# ENVIRONMENTAL SUSTAINABILITY

We are focused on environmental excellence across our operations, supply chain and product design.

Our 2020 climate goals are verified by the Science Based Targets initiative.

Actions that underscore our commitment to the future include:

- > Continuing to reduce emissions from AMD's operations to meet our 20% absolute reduction goal by 2020;
- > Pursuing “best-in-class” Foundry supplier environmental goals that significantly outperform industry averages;
- > Educating and inspiring employees to conserve resources through our “Go Green” environmental program; and
- > Advancing our award-winning 25x20 Energy Efficiency Initiative to deliver more compute performance with less power.



Learn more at [AMD.com/Planet](https://www.amd.com/Planet)



# AMD INDIA



**JAYA JAGADISH**

India Engineering Lead  
CVP, Silicon Design Engineering

AMD India is committed to AMD's founding principle, "People first, products and profits will follow." We live this philosophy through our commitments to corporate citizenship and by fostering a happy and healthy work culture in our offices.

Community service and volunteerism is an integral part of life at AMD India. Each month employees participate in a cause of their choice. Our employees have donated resources and spent over 1,200 hours in volunteering activities in 2018. Activities include planting trees to green our cities, spending quality time with our elderly and those at Palliative care centers, supporting under-served schools with STEM education, and helping students return to school after the devastating floods in Kerala.

AMD India supports several initiatives to foster the engineering talent in India. We partner with over 20 engineering colleges to help prepare graduates for careers in the semi-conductor space. We also run several research programs in processor technology with premier schools.

As we celebrate our 50th year in 2019, we are more focused and determined than ever to ensure our work and operations in India help our communities. We aim to bring the benefits of high-performance computing to the largest number of people. In this sense, our work is aligned to the Government of India's digitization vision. We will continue to partner with stakeholders in the public and private sector to make this vision a reality.





### ABOUT AMD INDIA PRIVATE LIMITED

AMD established its first R&D center in India in 2004 in Bengaluru and then expanded its presence to Hyderabad with the acquisition of ATI in 2006. These centers employ over 1,600 people including 1,500 specialized engineers who work at the very high-end of the processor technology spectrum. We have marketing offices in Gurugram and Mumbai where teams focus on business development and building brand awareness for AMD products in the country and beyond.

### ENVIRONMENTAL STEWARDSHIP

We strive to reduce our environmental footprint through sustainable and conservation efforts across our sites in India. We use recycled water to flush toilets and irrigate our premises. We recycled over 22 million liters of water and over 12,000 kilograms of waste in 2018, as well as planted over 1,300 trees. In one of our most recent and fun additions, we now maintain a vegetable garden within our office premises in Bengaluru!

### CORPORATE SOCIAL RESPONSIBILITY

AMD India is committed to operating responsibly and contributing to the social and environmental well-being of our communities. We share the Indian government's vision of providing sustained economic growth, ensuring a stable and safe environment, and treating people with dignity and respect. We invest money, time, and technology in organizations that help strengthen communities in India. Additionally, our workforce helps make our communities a better place by donating their time, talent, and money to charitable causes.



# CSR INITIATIVES

## HELPING FLOOD VICTIMS

In August 2018, Kerala and the Kodagu district in Karnataka, were battered by one of the worst floods to hit India. Houses were washed away, and thousands of school children lost their belongings including uniforms, textbooks and bags. AMD India partnered with United Way of Bengaluru (UWB) to help children get back to school by providing them with school essentials. Our employees assembled 2,500 kits that were distributed to 25 schools across these regions.

## FOSTERING STEM EDUCATION

AMD India, in collaboration with Qwest Alliance, has set up computer labs in four government schools in Hyderabad and Bangalore to foster an early interest in computing among students. Using Scratch, a creative programming tool, children in class eighth and ninth are taught how to build games, animations, and stories. In 2018, over 750 children attended computer classes and worked on more than 50 projects. Students with the most interesting concepts were invited to AMD offices. They interacted with employees and got a glimpse of what it means to work as a computer engineer.

In addition, we have set up a science lab and library at a government school in Hyderabad to promote interest in experimental learning and reading. In collaboration with United Way of Hyderabad and Agastya Foundation, AMD hosted three science fairs that brought together over 5,000 children from in and around the school.





## BORN LEARNING CAMPAIGN

AMD is working with UWB on a program that will help children between 3-6 years old be healthy and school ready. In 2018, the program supported 250 children in 10 rural child care centers near Mandur village in Bengaluru. The field staff conducted door-to-door visits to educate parents about the importance of schooling, provided early-learning materials, set up a children's library, and hosted health camps. AMDers hosted creative classes and interacted with children on personal hygiene. These initiatives have helped lead to an increase in the number of children joining school.

## ERADICATING CHILD LABOR

In partnership with the Childwelfare & Holistic Organization for Rural Development (CHORD), AMD is driving an initiative to rescue, rehabilitate and reintegrate children who have been forced into child labor in the urban slums of Hyderabad. CHORD drives interventions to empower and educate families, especially mothers and youth in the community, against the perils of forcing children to work. The children are put in a remedial school to help them catch up with mainstream education. They are provided nutritious mid-day meals, snacks, uniforms, books, footwear and other things to help ensure they don't slip back into labor on account of poverty. In 2018, over 150 children were rescued and 70 of them, including 50 girls, enrolled in regular schools. AMD employees regularly visit the school to monitor progress and spend time with the children.







# AMD'S CULTURE OF INCLUSION

At AMD, we harness our world-class technology to take on some of the world's toughest problems. This can't be done alone. It takes a diverse group of voices gathered together – every day of the week – to find solutions and drive our business growth. We thrive through respect for and inclusion of our employees' individual talents, personalities, experiences and passions. Differences challenge us in a healthy way – and improve our capability to bring the benefits of high-performance computing to consumers in a more meaningful manner.

From many voices, we create one vision of the future, together.

Inclusion starts with knowing one another – both professionally and personally. In 2018, AMD launched our newest resource group for employees caring for children, parents and pets; we achieved our highest participation among employee teams in our annual community Day of Service; and again, we earned a 100% score on the Human Rights Campaign's Corporate Equality Index.

We thank our workforce, partners and site communities for joining us as we continue to deliver technology designed to help solve some of the world's toughest challenges.

*Susan Moore*

**Susan Moore** | Corporate Vice President

# ENABLING TODAY, INSPIRING TOMORROW

---

Art is inspired by life, much in the same way that AMD innovations are inspired by life – by people and what they can accomplish with the right technology.

AMD is a company that dares to imagine a better world and takes inspiration from our customers to deliver innovative solutions to the challenges and possibilities of our digital age. We don't create technology for technology's sake – we innovate for you and what you can achieve.

Learn more about how AMD is powering better lives at  
[AMD.com/CorporateResponsibility](https://www.amd.com/CorporateResponsibility)

©2019 Advanced Micro Devices, Inc. All rights reserved. AMD, the AMD logo, Ryzen, Radeon, Vega, EPYC and combinations thereof are trademarks of Advanced Micro Devices, Inc. Other trade names are used for identification purposes only and may be the property or trademarks of their respective owners.  
PID# 19248758-C