



---

CORPORATE  
CITIZENSHIP  
SUMMARY  
**UNITED STATES**

GREATER TECHNOLOGY GREATER GOOD

# MESSAGE FROM OUR PRESIDENT AND CEO



2019 marks AMD's 50th anniversary. Our commitment to pushing the boundaries of what is possible in high performance computing has never been stronger. AMD's innovative computing and graphics products are helping the best and the brightest tackle the world's toughest challenges. From medical advances and scientific breakthroughs to solutions for more efficient use of our natural resources, our products are transforming lives and our planet for the better.

At AMD, we strive to make a positive impact on our industry and our world. From Fortune 500 businesses to cutting-edge scientific research institutions to everyday consumers – users rely on AMD technology to make what was impossible, possible. We're not slowing down. There is always the next challenge to solve.

We are extremely proud of our history and are equally excited about what we will accomplish over the next 50 years for our communities and our planet.

A handwritten signature in black ink, reading "Lisa Su".

**Dr. Lisa Su**

President and CEO

**AMD** | **50**

CELEBRATING 50 YEARS *of* INNOVATION

# WHO WE ARE

---

Since our founding in 1969, AMD has driven innovation in high-performance computing, graphics and visualization technologies – the building blocks for gaming, immersive platforms and the datacenter. Hundreds of millions of consumers, leading Fortune 500 businesses and cutting-edge scientific research facilities rely on AMD technology daily to improve how they live, work and play. AMD employees around the world are focused on building great products that push the boundaries of what is possible.

AMD  
**EPYC**

AMD  
**RADEON**

AMD  
**RYZEN**

Learn more at [AMD.com](https://www.amd.com)

## WHAT WE MAKE

---

### GRAPHICS

AMD combines breakthrough graphics architecture with cutting-edge software to build platforms that can handle the most challenging, important and graphics-intensive applications today – including gaming, creation, compute, AI, and virtual and augmented reality.



Gaming



Compute & AI



Virtual &  
Augmented Reality

### COMPUTE

AMD's high-performance microprocessors and chipsets deliver powerful, efficient performance for consumer and commercial devices like desktops, laptops and servers.



Client Systems



Infrastructure & Cloud

### SOLUTIONS

AMD's leading high-performance graphics and compute design capabilities uniquely enable us to create differentiated solutions for customers and partners. From embedded products that power medical imaging devices and digital signage to semi-custom processors for leading game consoles and beyond, AMD technology is everywhere.



Semi-Custom



Vertical Platforms



Partnerships





## THE POWER BEHIND INNOVATION

We strive to ensure that working conditions throughout our supply chain are safe, and that everyone involved in delivering AMD products – from the design lab to the manufacturing line – is treated with dignity and respect.

We nurture an inclusive work environment where employees bring their unique perspectives and passions to work every day.



## OUR COMMITMENT TO THE FUTURE

We are committed to operations that reduce greenhouse gas emissions and electricity use. We focus on developing energy-efficient processors, and our 2020 climate goals are verified by the Science Based Targets Initiative.

We contribute to our local communities through the time and talent of our workforce in company-sponsored volunteer events.

Learn more at [AMD.com/CorporateResponsibility](https://amd.com/corporateresponsibility)



## TECHNOLOGY ENABLING A BETTER WORLD

We believe that immersive and instinctive computing will transform our lives, and we are inspired by how digital technology has improved our world. From helping students learn to creating innovative new therapies for veterans to mapping the universe we live in – AMD technology is opening new doors to a better world.

# TECHNOLOGY ENABLING A BETTER WORLD



## NEW HPE+AMD SERVER SOLUTION ENABLES FAST, ACCURATE DATA EXPLORATION

---

Dedicated to advancing scientific discovery, the University of Notre Dame Center for Research Computing (CRC) enables multidisciplinary research through advanced computation, data analysis and other digital tools. When the CRC decided to add a new high-performance computing (HPC) cluster, one of the partners they turned to was AMD – a provider of technologies used to help solve some of the world's toughest challenges.



## zSPACE TAKES LEARNING INTO NEW DIMENSIONS WITH AMD

---

zSpace equips today's classrooms to be more adaptable, engaging and individualized for students through sophisticated, immersive learning technologies. Their instructional tools enable features like 3D visualization and modeling, haptic and touch feedback, as well as virtual reality (VR) and augmented reality (AR). More than 1,000 school districts, technical centers, medical schools and universities around the globe use zSpace.



## ENABLING PRECISION WHERE IT'S NEEDED MOST

---

Diagnostic displays play an essential role in radiological practices. To help doctors provide the best possible care to patients, Barco utilized AMD's industry-leading graphics solutions when designing their powerful new display systems. Enabling acute improvements in day-to-day medical operations, these systems revolutionize diagnostic imaging and the assessment of patient information – enhancing workflow and quality of care.



# NEXT HORIZON

THE DATACENTER HOLDS  
ENORMOUS POTENTIAL  
TO IMPROVE OUR WORLD

## THE WORKLOADS OF THE FUTURE REQUIRE INCREDIBLE AMOUNTS OF COMPUTE POWER



HIGH-PERFORMANCE  
COMPUTING

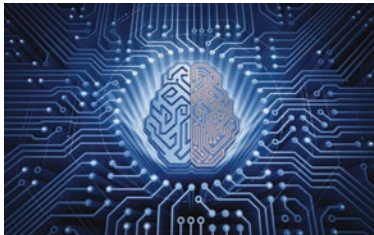


CLOUD, HYPERSCALE  
& VIRTUALIZATION



MACHINE  
INTELLIGENCE

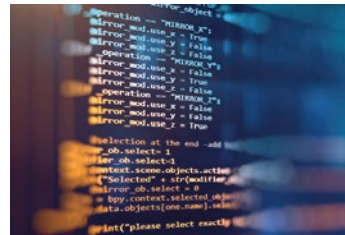
## AMD WILL PUT THAT POWER IN THE HANDS OF PEOPLE EVERYWHERE



IMMERSIVE & INSTINCTIVE  
COMPUTING



BIG DATA  
ANALYTICS



SOFTWARE-DEFINED  
STORAGE

Learn more at [AMD.com/EpycServer](https://www.amd.com/EpycServer)



# THE NEXT FRONTIER IN SUPERCOMPUTING

AMD, in conjunction with Cray Inc., Oak Ridge National Laboratory (ORNL), and the U.S. Department of Energy (DOE), plan to create the Frontier system, expected to be world's fastest supercomputer. To solve some of the toughest challenges in the world today, the Frontier system is designed to simulate, model, and advance the understanding of the interactions underlying the science of weather, sub-atomic structures, genomics, physics, and more.

"AMD is proud to partner with Cray and ORNL to deliver what is expected to be the world's most powerful supercomputer," said Forrest Norrod, senior vice president and general manager, AMD Datacenter and Embedded Systems Group. "Frontier will feature custom CPU and GPU technology from AMD and represents the latest achievement on a long list of technology innovations AMD has contributed to the Department of Energy exascale programs."

AMD has a proud supercomputing history and a long-standing engagement with DOE, starting with the Jaguar supercomputer in 2005 and Titan supercomputer in 2012. The Frontier system leverages years of exascale technology investments by DOE. The contract award includes technology development funding, a center of excellence, several early-delivery systems, the main Frontier system and multi-year systems support.



*Image courtesy of the ORNL. Pictured (front row from left) Peter Ungaro, Cray President and CEO; Lisa Su, AMD President and CEO; Rick Perry, U.S. Secretary of Energy; Paul Dabbar, DOE Under Secretary for Science; Mark Menezes, DOE Under Secretary of Energy; Randy Boyd, University of Tennessee Interim President; Johnny Moore, DOE Oak Ridge National Laboratory Site Office Manager*





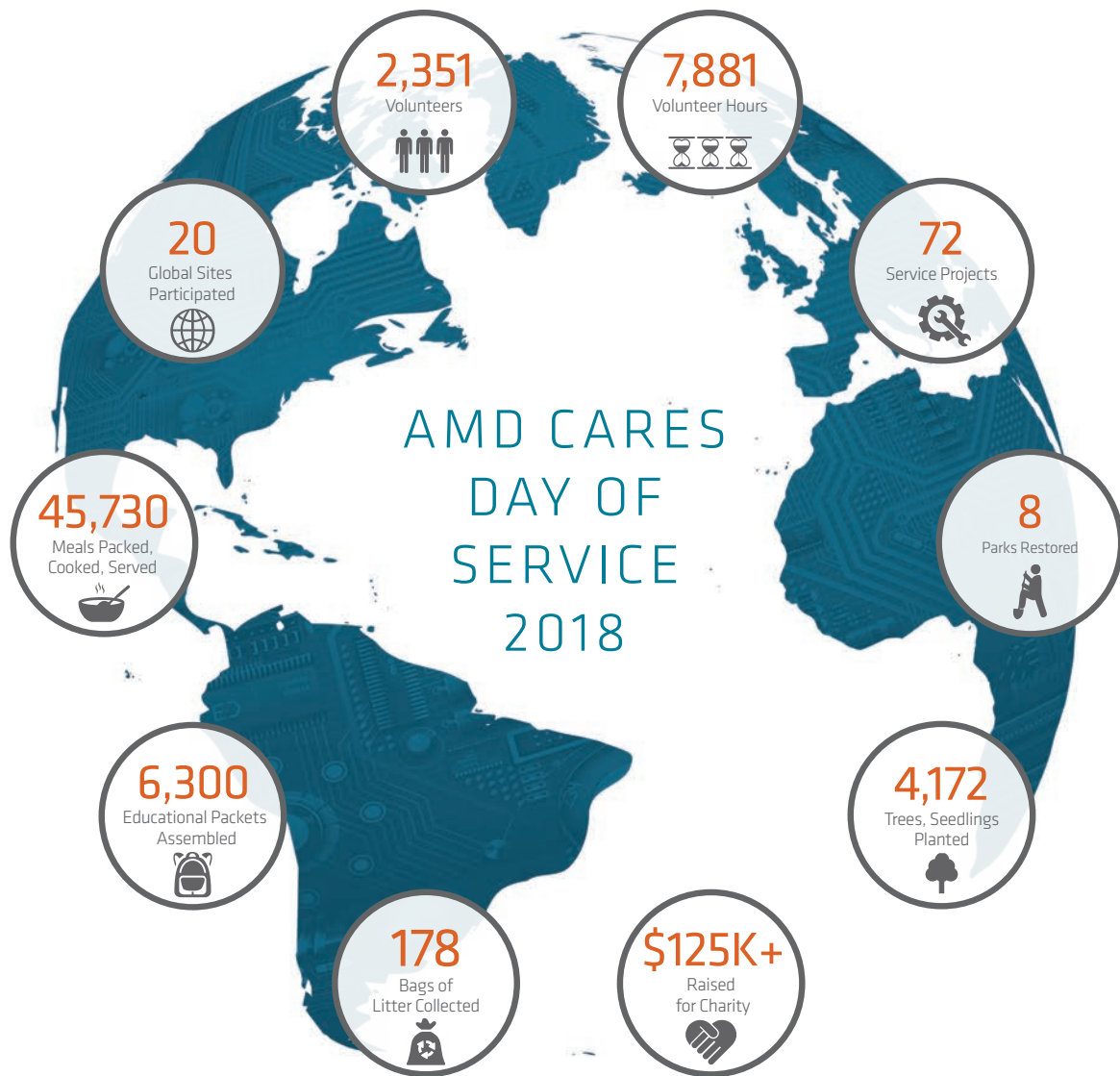
## COMMUNITY AFFAIRS

---

For more than 35 years, AMD has invested time, money, and technology in organizations that help strengthen communities worldwide. Our employees also continue to make their communities a better place through volunteerism and donations to local organizations. Since 1995, AMD has contributed \$18.2 million USD to charitable causes and our workforce has performed more than 210,000 hours of volunteer service.

Learn more at [AMD.com/Community](https://www.amd.com/Community)





## AMD CARES DAY OF SERVICE 2018

### STRENGTHENING OUR COMMUNITIES WORLDWIDE

AMD has always believed that workplace volunteering strengthens our communities, our employees and our company. Every year we amplify this belief through our annual AMD Cares Day of Service – encouraging our global workforce to volunteer in social and environmental projects, reinforcing our longstanding commitment to our communities.



# RESPONSIBILITY ON A GLOBAL SCALE



## SANTA CLARA

**Established:** 2017  
Original HQ in Sunnyvale, 1969  
**Operations:** AMD Corporate  
Headquarters, R&D, Design



## MARKHAM

**Established:** 1985  
Acquired by AMD in 2006  
**Operations:** AMD Canadian  
Headquarters and  
Graphics R&D Center



## AUSTIN

**Established:** 1978  
**Operations:** Corporate,  
R&D, Design

- R&D, Design
- Sales, Business Services
- Corporate Offices

## AMD REGIONS

Americas

1

EMEA

2

Asia Pacific

3

Greater China

4

India

5

1

- Atlanta, GA
- Austin, TX
- Bellevue, WA
- Boxborough, MA
- Buenos Aires, Argentina
- Calgary, Alberta
- Fort Collins, CO
- Houston, TX

- Maple Grove, MN
- Markham, Ontario
- Mexico City, Mexico
- Orlando, FL
- San Diego, CA
- Santa Clara, CA
- São Paulo, Brazil

2

- Brussels, Belgium
- Dubai, United Arab Emirates
- Grenoble, France
- Istanbul, Turkey
- Milan, Italy
- Milton Keynes, United Kingdom
- Moscow, Russia
- Munich, Germany

## HYDERABAD

Established: 2008

Operations: R&D, Design,  
Focusing on Graphics and  
Computing Solutions



## MALAYSIA

Penang Established: 1972

Operations: Assembly,  
Test, Mark and Pack Facility

Cyberjaya Established: 2008

Operations: Sales, Business Services



## BENGALURU

Established: 2004

Operations: R&D, Design  
Focusing on Graphics and  
Computing Solutions



## SINGAPORE

Established: 1984

Operations: Singapore Product  
Development Center (SPDC)  
and APJ Sales & Marketing



## BEIJING

Established: 2004

Operations: Greater  
China Headquarters,  
Sales, R&D, Design



## SHANGHAI

Established: 2006

Operations: Shanghai  
Research and Development  
Center (SRDC); AMD's  
Largest System Design Hub  
Outside of the United States



## TAIPEI

Established: 1987

Operations: R&D, Design



3

- Bangkok, Thailand
- Cyberjaya, Malaysia
- Jakarta, Indonesia
- Melbourne, Australia
- Penang, Malaysia
- Seoul, South Korea
- Singapore
- Sydney, Australia

4

- Beijing, China
- Chongqing, China
- Hong Kong, China
- Hsinchu, Taiwan, China
- Shanghai, China
- Shenzhen, China
- Suzhou, China
- Taipei, Taiwan, China

5

- Bengaluru, India
- Gurgaon, India
- Hyderabad, India
- Mumbai, India



# ENVIRONMENTAL SUSTAINABILITY

We are focused on environmental excellence across our operations, supply chain and product design.

Our 2020 climate goals are verified by the Science Based Targets initiative.

Actions that underscore our commitment to the future include:

- > Continuing to reduce emissions from AMD's operations to meet our 20% absolute reduction goal by 2020;
- > Pursuing "best-in-class" Foundry supplier environmental goals that significantly outperform industry averages;
- > Educating and inspiring employees to conserve resources through our "Go Green" environmental program; and
- > Advancing our award-winning 25x20 Energy Efficiency Initiative to deliver more compute performance with less power.



Learn more at [AMD.com/Planet](https://www.amd.com/Planet)



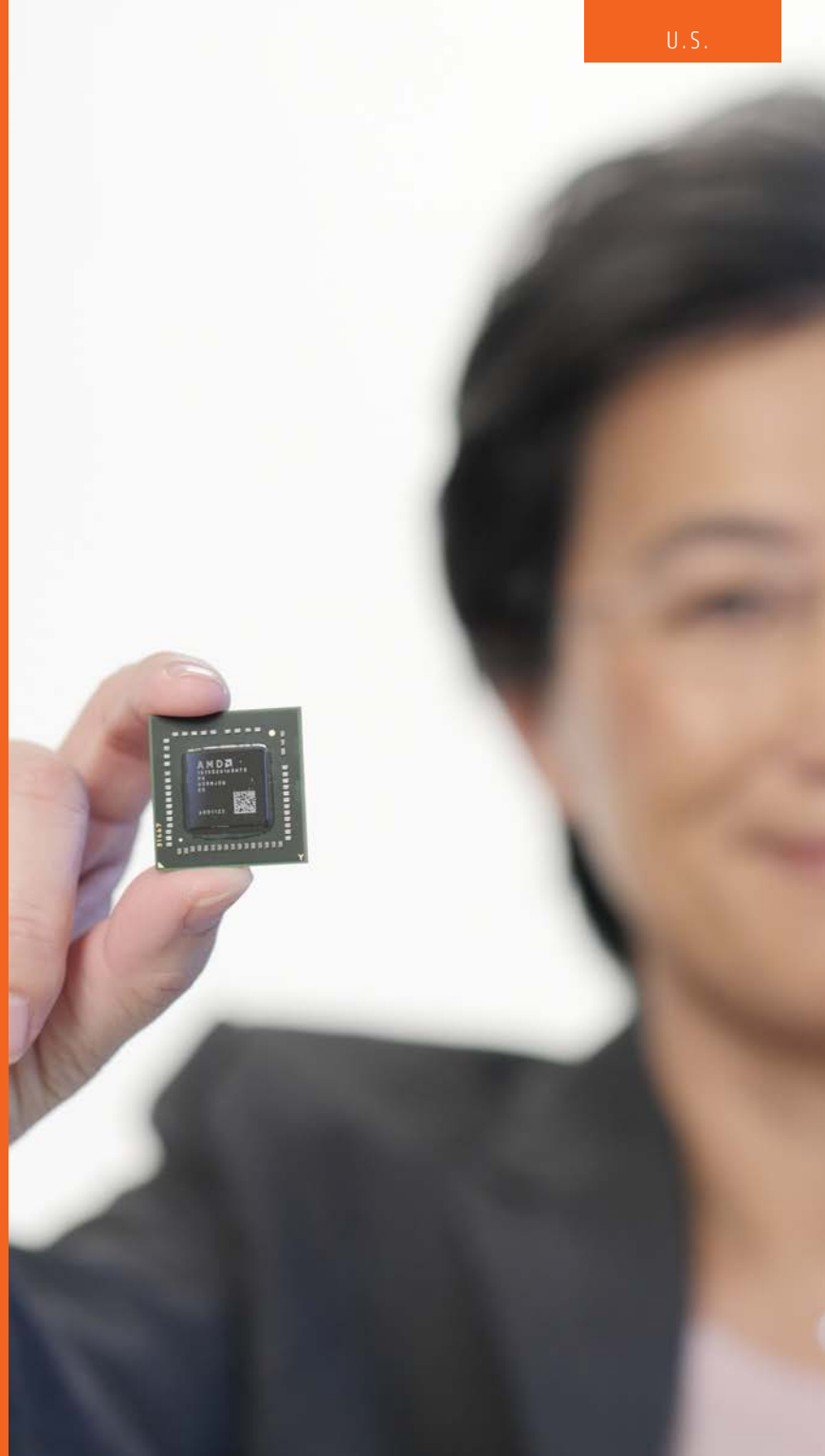
# AMD UNITED STATES

---

Since 1969, AMD has been a cutting-edge information technology company that brings innovation, jobs, and economic benefit to the U.S. Today, these extraordinary technologies advance high performance computing (HPC), machine learning, artificial intelligence (AI), augmented and virtual reality, blockchain applications, and more.

Every year, AMD spends billions of dollars in research, development, datacenters, and the manufacturing of graphics cards and processors, which drives further investment in the U.S. labor market and other business sectors.

AMD's almost 4,000 U.S. based employees design and market some of the most critical computer components, graphics cards, and microprocessors that power millions of the world's personal computers, workstations, gaming consoles, video displays, and cloud servers. In fact, the company's technology is the brain behind many of the computing devices Americans use every day.



# A CULTURE OF INNOVATION

AMD pioneers technology that enables consumers to push the limits of what is possible and in doing so, bolster America's standing as one of the world's most technologically advanced nations. Today, the company is laser-focused on innovating through our computing and graphics IP to create products that enable more intuitive and immersive experiences that define the next era of computing. For example, AMD, in conjunction with Cray Inc., Oak Ridge National Laboratory, and the U.S. Department of Energy, plan to create the Frontier system, expected to be world's fastest supercomputer.

Furthermore, the company has a long tradition of supporting open industry standards by contributing to open source tools and even sharing our work as open source projects. AMD champions a transparent, competitive industry to help organizations and consumers have access to the best technology options.

In addition, AMD's 5,000+ U.S. patents highlight our commitment to innovation in critical technological areas such as circuit design, hardware and software architecture, and semiconductor manufacturing.



Our AMD Ryzen™ products continue trailblazing the IT industry awards, including the CES 2018 Best of Innovation Award in the Computer Hardware and Components category for the Ryzen™ Threadripper™ 1950X processor<sup>1</sup>.

1. <https://www.amd.com/en-us/press-releases/Pages/amd-ryzen-threadripper-2017nov09.aspx>

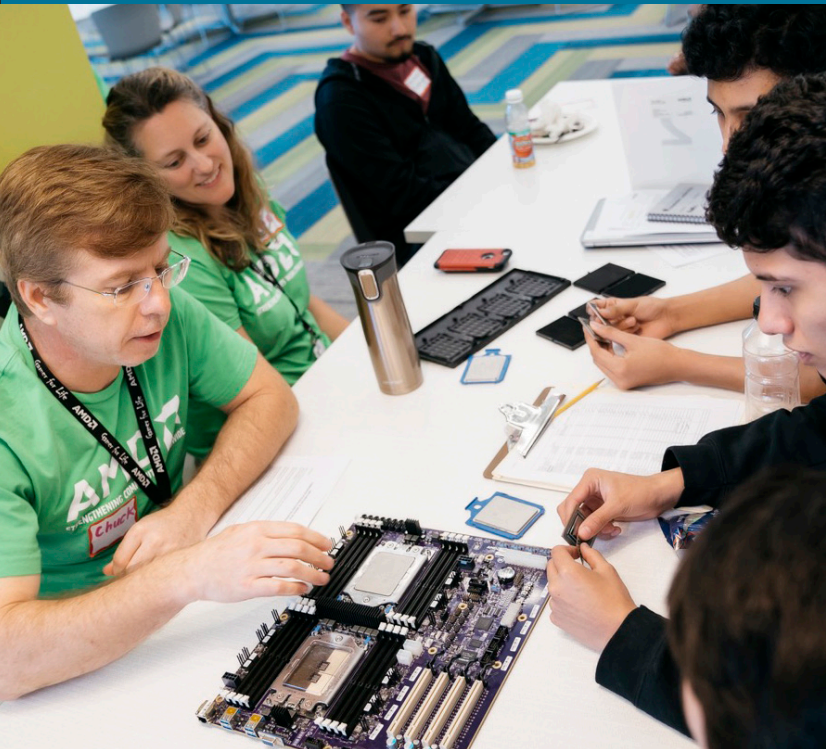
AMD is training future industry leaders and technological innovators at design centers across the U.S. With almost 200 interns typically each year, AMD is developing the next wave of high-tech inventors in America.

Interns contribute to real research projects and learn directly from AMD engineering and computer science leaders. Student projects often advance company research, and internships may lead to full-time employment offers from AMD.

AMD also invests time and resources in STEM events across the U.S. to encourage all students to follow their passion.

And that investment continues for full-time employees. AMD engineering teams build game-changing products that enable the world around us and inspire the next generation of graphics and computing innovations.

## CREATING THE FUTURE TECHNOLOGY WORKFORCE







# AMD IN THE COMMUNITY

AMD is proud to contribute to the communities where we live and work. Between 2012 and 2018, AMD has:

- > Generated a total of \$43.5 billion in economic activity in the U.S. economy
- > Supported an average of 14,833 U.S. jobs per year (direct and indirect)
- > Created more than \$11.4 billion in labor income for U.S. workers
- > Invested in U.S. manufacturing through a priority supplier in New York<sup>1</sup>

Giving back to the local community is a core AMD value. For over 35 years, AMD has invested money, time, and technology in organizations that help strengthen our U.S. site communities. Additionally, AMD's workforce donates time, talent, and money to charitable causes. Since 1995, AMD has contributed more than \$18.3 million to charitable causes and its U.S. workforce has performed over 105,000 hours of volunteer service.

In 2018, nearly 1,200 U.S. employees volunteered over 5,400 hours to a variety of causes that connect them to the community. In addition to volunteerism throughout the year, we annually celebrate volunteerism with the AMD Cares Day of Service, an annual campaign aimed at getting AMDers to team up for a company-wide celebration of community service.

<sup>1</sup> For more information, contact [CorporateResponsibility@AMD.com](mailto:CorporateResponsibility@AMD.com)







# AMD'S CULTURE OF INCLUSION

At AMD, we harness our world-class technology to take on some of the world's toughest problems. This can't be done alone. It takes a diverse group of voices gathered together – every day of the week – to find solutions and drive our business growth. We thrive through respect for and inclusion of our employees' individual talents, personalities, experiences and passions. Differences challenge us in a healthy way – and improve our capability to bring the benefits of high-performance computing to consumers in a more meaningful manner.

From many voices, we create one vision of the future, together.

Inclusion starts with knowing one another – both professionally and personally. In 2018, AMD launched our newest resource group for employees caring for children, parents and pets; we achieved our highest participation among employee teams in our annual community Day of Service; and again, we earned a 100% score on the Human Rights Campaign's Corporate Equality Index.

We thank our workforce, partners and site communities for joining us as we continue to deliver technology designed to help solve some of the world's toughest challenges.

*Susan Moore*

**Susan Moore** | Corporate Vice President

# ENABLING TODAY, INSPIRING TOMORROW

---

Art is inspired by life, much in the same way that AMD innovations are inspired by life – by people and what they can accomplish with the right technology.

AMD is a company that dares to imagine a better world and takes inspiration from our customers to deliver innovative solutions to the challenges and possibilities of our digital age. We don't create technology for technology's sake – we innovate for you and what you can achieve.

Learn more about how AMD is powering better lives at  
[AMD.com/CorporateResponsibility](https://www.amd.com/CorporateResponsibility)

©2019 Advanced Micro Devices, Inc. All rights reserved. AMD, the AMD logo, Ryzen, Radeon, Vega, EPYC and combinations thereof are trademarks of Advanced Micro Devices, Inc. Other trade names are used for identification purposes only and may be the property or trademarks of their respective owners.  
PID# 19248758-A